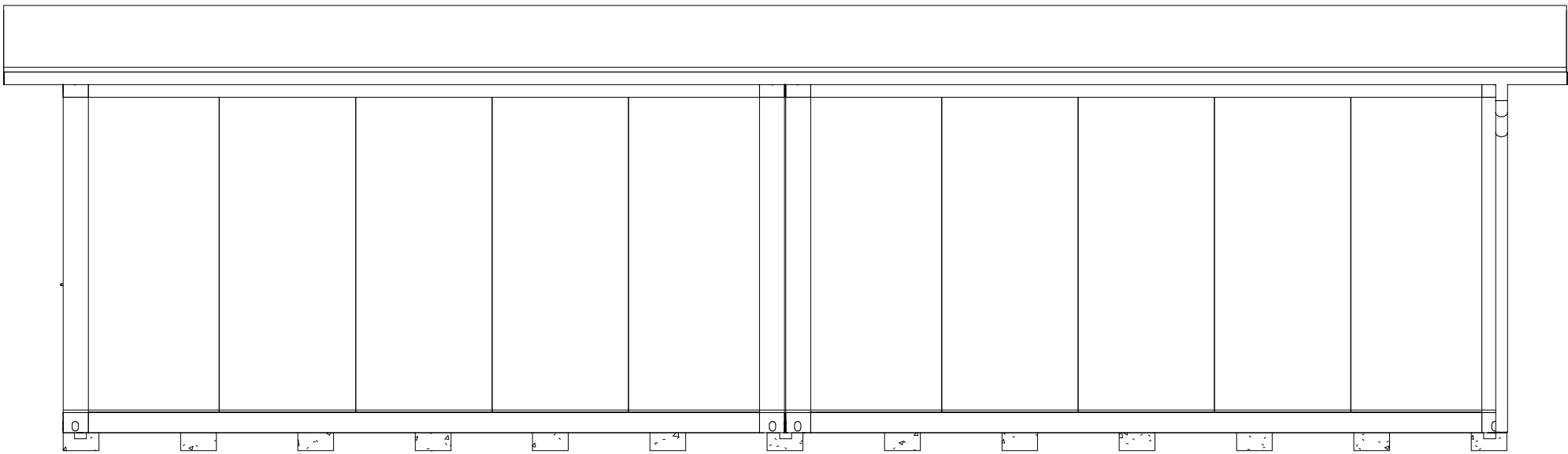
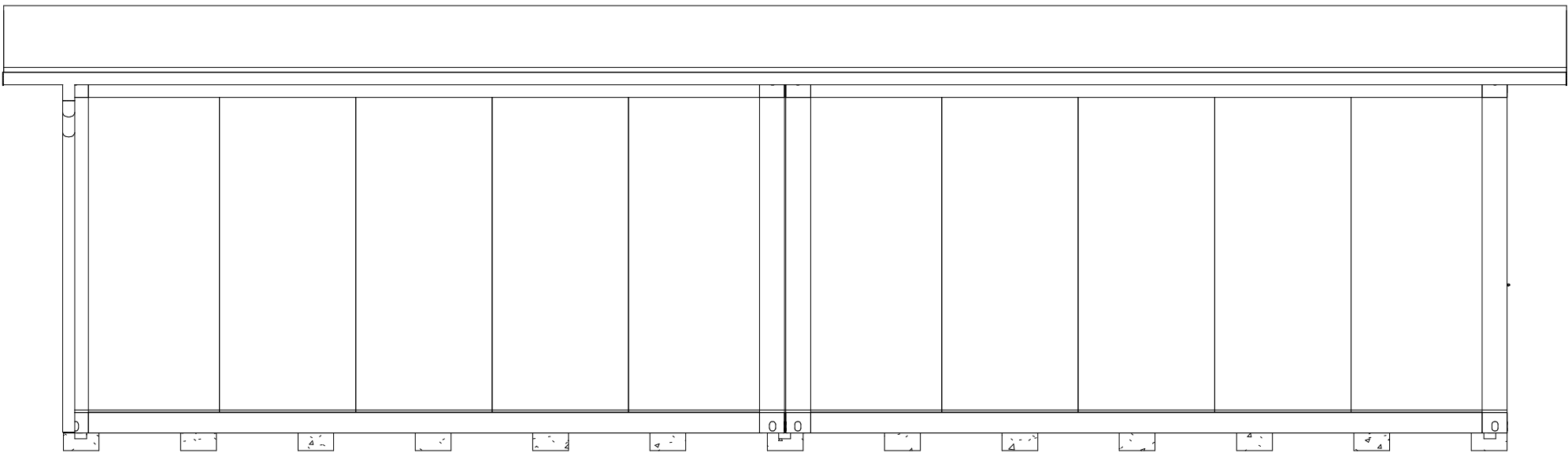


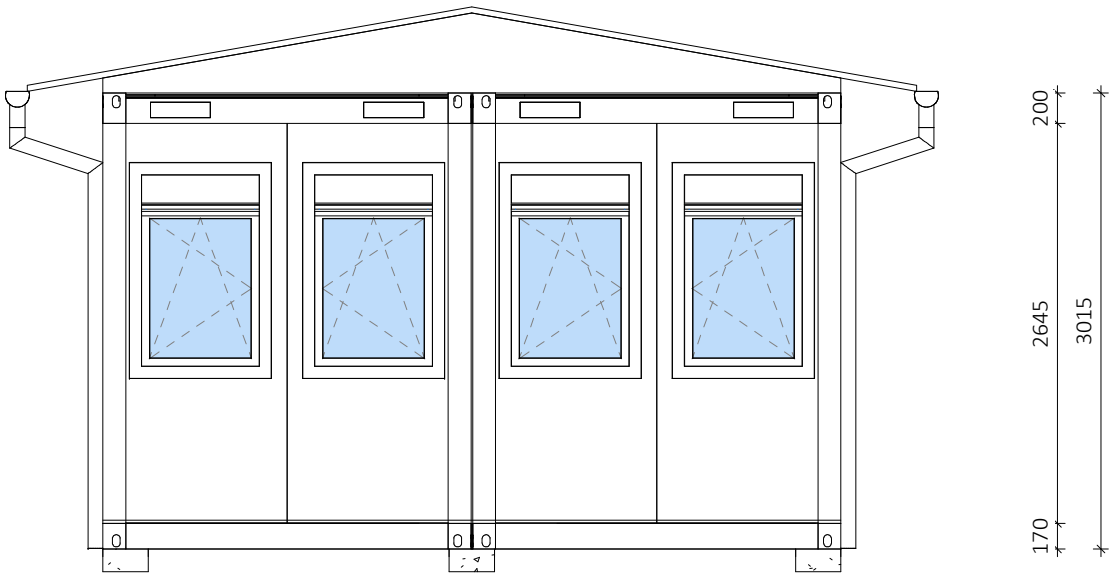
Pogled spredaj
1 : 50



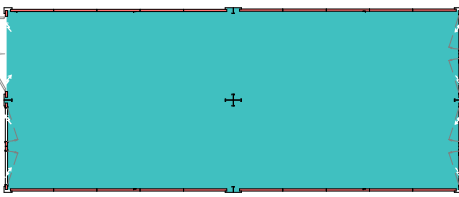
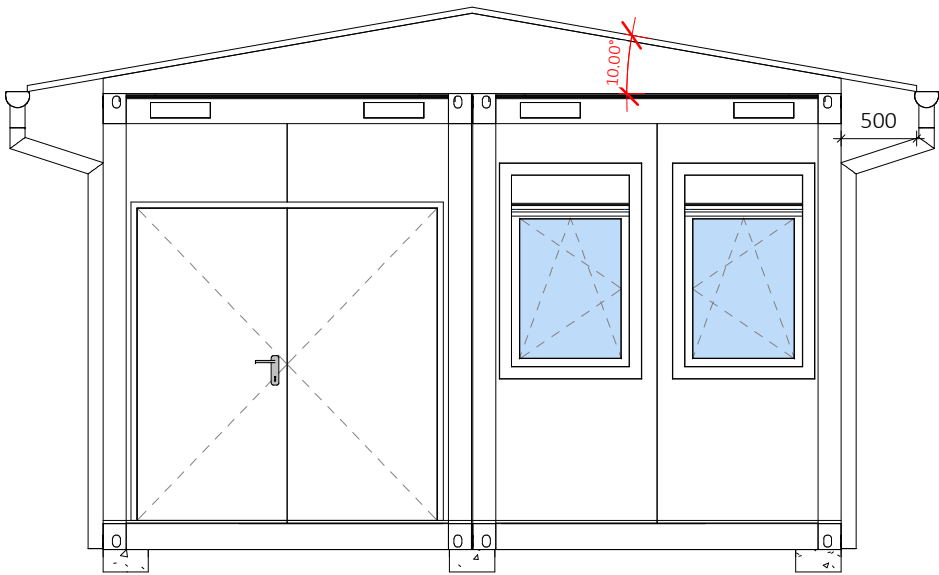
Pogled zadaj
1 : 50



Pogled z desne
1 : 50

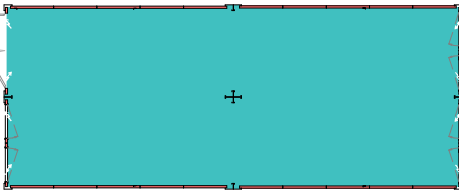


Pogled z leve
1 : 50



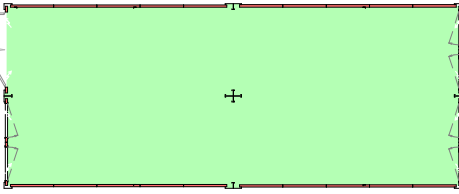
Osnova poda

T-FIX



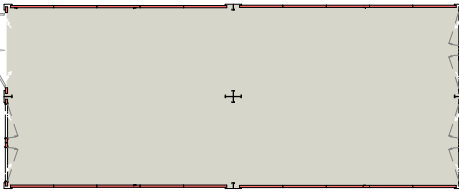
Obloga poda

Brez



Obloga stropa

FT 9002



Barva sten znotraj

RAL 9002

Poz.	Naziv	Svetle dim.	Dim.	Material	Kos
D112	Vrata dvokrilna AL(EPS), L	1845x2000	1975x2060	AL	1
W101	Okno enokrilno z roletto, R		885x1372	PVC	3
W102	Okno enokrilno z roletto, L		885x1372	PVC	3

Tip luči	Kos
Luč neonska 1x58W	8

Elektro oprema	Kos
Vtičnica dvojna IP20	2
Vtičnica enojna IP20	5
Stikalo navadno IP20	1

Tip panela	Izolacija	Dolžina [m]	Stk.
FTV-60 [9002/white]	60mm	32.06	28

REM d.o.o.

Investitor:	Št. risbe:	Nalepke	
Ime risbe:	10105-20-01 - A-03	Vodovod	/
Objekt:	Verzija:	Elektrika	/
Št.projekta:	04	Vilice	IEC 60364
Datum:	Merilo:	Izolacija stropa	100mm
11.6.2020	As indicated	Izolacija poda	150mm
	Risat:	Okvir okvirja	RAL 9002
	Andrej Kastelic	Notranja višina	2,7m
	Odobril:	Izvedba CTN	Zmontiran
	Matej Možina		